



सीएसआईआर-केंद्रीय खाद्य प्रौद्योगिक अनुसंधान संस्थान  
CSIR- CENTRAL FOOD TECHNOLOGICAL RESEARCH INSTITUTE  
मैसूरु / MYSURU-570 020, भारत / INDIA

(Constituent Laboratory of CSIR, New Delhi (Ministry of Science & Technology)  
An ISO 9001:2008, ISO 14001:2004 & ISO 17025:2005, NABL Accredited Laboratory

सं. /No. CFTRI /74233/2022

दिनांक / Date: 05<sup>th</sup> May, 2022

### NOTICE INVITING TENDER

क्रम सं. Sl. No.	निविदा संदर्भ Tender Reference	विवरण / Description
1	CFTRI/74233/2022	Ragi Processing Line – 1No.

1. Director, CSIR-CFTRI, Mysuru invites tenders for supply, installation, commissioning and satisfactory demonstration of Ragi Processing Line – 1Unit
2. **Pre Bid conference is scheduled on 12.05.2022 at 03.00p.m at CSIR-CFTRI, Mysore**
3. Last date for submission of Tender is 2.00 P.M. (IST) on 30/May/ 2022 online in etenders.gov.in.
4. Technical Bid Opening on line in e-tender portal at 2.30P.M on 31/ May /2022
5. EMD: Rs 2,30,000/-OR Bid Security Declaration Form (As per Annexure-4 must be uploaded along with technical bid)
6. Bidder has to submit Non-applicability of exclusion form restrictions under Rule 144(xi) of GFR-2017 (Format enclosed with tender documents)
7. This tender is open for Purchase Preference to Make in India and MSME, Bidder must upload class I/class II self-certification Format along with Technical Bid.

हस्ता./Sd/-

भंडार एवं क्रय नियंत्रक

Controller of Stores and Purchase

Ph: +91- 821-2515440/2515447

E-mail: [cosp@cftri.res.in](mailto:cosp@cftri.res.in), [sosp@cftri.res.in](mailto:sosp@cftri.res.in)

**CRITICAL DATE SHEET**

**CRITICAL DATE SHEET:**

**Tender Ref/No. CFTRI/74233/2022**

<b>Sl.No.</b>	<b>Stage</b>	<b>Date &amp; Time</b>
<b>1</b>	<b>Publish Date &amp; Time</b>	<b>05/05/2022 @ 12.00a.m.</b>
<b>2</b>	<b>Document Download Start Date &amp; Time</b>	<b>05/05/2022 @ 12.00a.m.</b>
<b>3.</b>	<b>Pre-Bid Conference</b>	<b>12-05-2022 @ 3.00pm</b>
<b>3</b>	<b>Bid submission Start Date &amp; Time</b>	<b>18/05/2022 @ 5.00p.m.</b>
<b>4</b>	<b>Bid submission End Date &amp; Time</b>	<b>30/05/2022 @ 2.00p.m.</b>
<b>5</b>	<b>Bid Opening Date &amp; Time</b>	<b>31/05/2022 @ 2.30p.m.</b>

## Detailed Technical Specification

SL. NO.	CFTRI specifications and essential features of individual machine / system	Quantity
1	<p><b>SS Soaking/ Steaming tanks with SS supporting structure:</b></p> <ul style="list-style-type: none"> <li>• Cylindrical steaming tanks with conical bottom</li> <li>• Ragi holding capacity of tanks - 750kg each.</li> <li>• Material of construction (MOC): AISI304 SS sheet of 3mm thickness.</li> <li>• Tank Outlet spout - 60° from the horizontal.</li> <li>• Water and Ragi discharge system with pneumatic operated gate.</li> </ul> <p><b><u>Accessories</u></b></p> <ul style="list-style-type: none"> <li>➤ Single-stage air-compressor: <b>1no</b> <ul style="list-style-type: none"> <li>○ Air receiver, conforming to ASME Design, Capacity – 100ltrs</li> <li>○ Motor power – 2 to 3HP</li> <li>○ Max. Pressure – 10bar.</li> <li>○ Pressure gauge, switch and starter</li> <li>○ Air filter and Pressure relief valve</li> <li>○ Automatic start and stop loop control system</li> <li>○ Make: ELGI, Ingersoll rand, Coleparmer etc</li> </ul> </li> </ul>	2 nos.
2	<p><b>Dampener - Mixing Screw Conveyor/ with Moisture Conditioning/ with Dozing System:</b></p> <p>A mixing type screw conveyor system with three nozzles arranged in series to spray water in a fine mist on the mass of Ragi.</p> <ul style="list-style-type: none"> <li>• Capacity – 500kg/h</li> <li>• MOC: AISI304 <ul style="list-style-type: none"> <li>○ Bulk Density of material to be conveyed: 660kg/m<sup>3</sup></li> <li>○ Grain Size: 1.2 to 1.5mm</li> <li>○ Flowability: Average / Sluggish</li> <li>○ Abrasiveness: Mildly abrasive</li> </ul> </li> <li>• Conveyor Length: 11 to 15ft(approx.) or 2-stage of equal length 8ft(approx)</li> <li>• Trough Type: Double formed flange U-Trough</li> <li>• Trough Thickness: 3/16 or 1/4 inch</li> <li>• Cover Thickness: 14 or 12 gauge</li> <li>• Cover Type: Flange cover</li> <li>• Cover Clamp: Heavy-Duty Toggle Clamps</li> <li>• Slide Gate: Pneumatically flat activated gate</li> <li>• Hanger Type: Heavy duty, food grade</li> <li>• Drive: Direct Coupled in-line with VFD</li> <li>• Gap between the trough and screw - less than 0.5mm</li> <li>• Mixing conveyor fitted with water flow meter</li> <li>• Trough covers - tightly sealed and easily removable for frequent cleaning</li> </ul>	1 No.

	<p><b>Conveyor motor;</b> Appropriate capacity TEFC induction motor and DOL starter of reputed make (ABB, Bharat Bijlee, Crompton Greaves, ELGI, Havells, Kirloskar, REMI, Siemens) to run on 415V, 50Hz, 3-phase AC supply.</p> <p><b><u>Accessories</u></b></p> <ul style="list-style-type: none"> <li>➤ Single-stage air-compressor: <ul style="list-style-type: none"> <li>○ Air receiver, conforming to ASME Design, Capacity – 100ltrs</li> <li>○ Motor power – 2 to 3HP</li> <li>○ Max. Pressure – 10bar.</li> <li>○ Pressure gauge, switch and starter</li> <li>○ Air filter and Pressure relief valve</li> <li>○ Automatic start and stop loop control system</li> <li>○ Make: ELGI, Ingersoll rand, Coleparmer etc</li> </ul> </li> </ul>	
3	<p><b>Dampener - Mixing Screw Conveyor/ with Moisture Conditioning/ with Dozing System:</b> A mixing type screw conveyor system with three nozzles arranged in series to spray water in a fine mist on the mass of Ragi.</p> <ul style="list-style-type: none"> <li>• Capacity – 500kg/h</li> <li>• MOC: AISI304 <ul style="list-style-type: none"> <li>○ Bulk Density of material to be conveyed: 660kg/m<sup>3</sup></li> <li>○ Grain Size: 1.2 to 1.5mm</li> <li>○ Flowability: Average / Sluggish</li> <li>○ Abrasiveness: Mildly abrasive</li> </ul> </li> <li>• Conveyor Length: 8ft(approx.)</li> <li>• Trough Type: Double formed flange U-Trough</li> <li>• Trough Thickness: 3/16 or 1/4 inch</li> <li>• Cover Thickness: 14 or 12 gauge</li> <li>• Cover Type: Flange cover</li> <li>• Cover Clamp: Heavy-Duty Toggle Clamps</li> <li>• Slide Gate: Pneumatically flat activated gate</li> <li>• Hanger Type: Heavy duty, food grade</li> <li>• Drive: Direct Coupled in-line with VFD</li> <li>• Gap between the trough and screw - less than 0.5mm</li> <li>• Mixing conveyor fitted with water flow meter</li> <li>• Trough covers - tightly sealed and easily removable for frequent cleaning</li> </ul> <p><b>Conveyor motor;</b> Appropriate capacity TEFC induction motor and DOL starter of reputed make (ABB, Bharat Bijlee, Crompton Greaves, ELGI, Havells, Kirloskar, REMI, Siemens) to run on 415V, 50Hz, 3-phase AC supply.</p>	1No.

4	<p><b>Brushing unit</b> Brushing/Scarifier to degloom raw ragi with negligible damage, consists of spindle with brushes in a closed housing feeding hopper with regulated gate and discharge spout.</p> <ul style="list-style-type: none"> <li>➤ Capacity: 500kg/h</li> <li>➤ Brushing chamber – Fitted with adjustable brushing system with interchangeable wire mesh or perforated sheet for scarifying</li> <li>➤ Machine fitted with VFD for controlling the shaft rotation between 500-700RPM.</li> <li>➤ Adjustable airflow and feed control facility</li> </ul> <p><b>Motor:</b> Appropriate capacity TEFC induction motor and DOL starter of reputed make (ABB, Bharat Bijlee, Crompton Greaves, ELGI, Havells, Kirloskar, REMI, Siemens) to run on 415V, 50Hz, 3-phase AC supply.</p> <p><b><u>Accessories</u></b></p> <ul style="list-style-type: none"> <li>➤ 1 set of the additional following type of Nylon brushes (Soft, Medium, Hard) should be provided along with the machine suitable to fix in the spindle</li> <li>➤ 1 set of collection tray for brushed material</li> <li>➤ Dust collection system with goose neck cyclone, Suction fan and bag filter</li> </ul>	1 Unit
5	<p><b>Engelburg Huller</b></p> <ul style="list-style-type: none"> <li>• Type of machine – Number 1</li> <li>• Capacity: 500kg/h</li> <li>• V-Belt Drive system</li> <li>• Size of Driving Pulleys - 12" x 3B" (12" stand of pulley dia. 3 stand for no. of groove and B stand for B-type belt)</li> </ul> <p><b>Motor:</b> Appropriate capacity TEFC induction motor and DOL starter of reputed make (ABB, Bharat Bijlee, Crompton Greaves, ELGI, Havells, Kirloskar, REMI, Siemens) to run on 415V, 50Hz, 3-phase AC supply.</p>	1 No.
6	<p><b>Continuous Vibro Fluidized bed dryer</b> Double deck Continuous Vibratory fluid bed hot air dryer with one deck for cooling of soaked/steamed Ragi grains.</p> <ul style="list-style-type: none"> <li>• Capacity - 500kg/h</li> <li>• Material of construction: AISI304 SS</li> <li>• Drying air temp. through steam by suitable heat exchanger in the first chamber/deck: <u>40°C to 80°C (this is dry air temp. range)</u></li> <li>• Cooling in the second chamber/deck using ambient</li> </ul>	1 No.

	<ul style="list-style-type: none"> <li>• Vibrations to the decks are directed in vertical component to assist in fluidization of the material</li> </ul> <p><b><u>Accessories</u></b></p> <ul style="list-style-type: none"> <li>➤ Air distribution must ensure uniform product temperature across the depth and length of fluidization decks.</li> <li>➤ Steam source for drying from common Boiler</li> <li>➤ Electrical source for cooling through ambient air blower</li> <li>➤ Cyclone separators with bag filters and scrubbers to ensure zero pollution into the process area</li> <li>➤ Includes all regulatory and safety features</li> </ul> <p><b>Motor:</b> Appropriate capacity TEFC induction motor and DOL starter of reputed make (ABB, Bharat Bijlee, Crompton Greaves, ELGI, Havells, Kirloskar, REMI, Siemens) to run on 415V, 50Hz, 3-phase AC supply.</p>	
7	<p><b>Tray Dryer</b></p> <p>Electrically heated cross flow Tray dryer for drying of Ragi with 48 trays.</p> <ul style="list-style-type: none"> <li>• Operating temperature range: 40 °C to 140 °C at ambient pressure</li> <li>• Temperature Variation: ± 5.0 °C</li> <li>• Trays: 48 Nos., MoC: AISI304, Non-Perforated, 18G thickness, Dimension (LxBxW): 80x40x2.8cm approx.</li> <li>• MOC: Inside - AISI304 Outside - AISI304</li> <li>• Double wall type insulated with glass wool or equivalent</li> <li>• No. of Doors: 1 or 2</li> <li>• Control Panel <ul style="list-style-type: none"> <li>○ Microprocessors based PID temperature controller with dual display of set value and process Heater Switch: Rotatory ON-OFF</li> <li>○ Indicating lamps: R-Y-B</li> <li>○ Digital type temperature Controller</li> <li>○ Digital type temperature Indicator</li> <li>○ Starter for fan: Push button</li> </ul> </li> <li>• Heating Element <ul style="list-style-type: none"> <li>○ Mode of heating: SS tubular heating elements on the side</li> </ul> </li> <li>• Safety Grill in front of Fan and Heater</li> <li>• Safety cover for drive assembly</li> <li>• Gasket on the door to prevent heat loss</li> <li>• Explosion venting latches</li> </ul> <p><b>Fan Motor:</b> Appropriate capacity TEFC induction motor and DOL starter of reputed make (ABB, Bharat Bijlee, Crompton Greaves, ELGI,</p>	1 No.

	Havells, Kirloskar, REMI, Siemens) to run on 415V, 50Hz, 3-phase AC supply.	
8	<p><b>Abrasive disc grinder for grains</b></p> <ul style="list-style-type: none"> <li>• <u>Emery stone size =Dia30” without any grooves or feathering on the grinding surface</u></li> <li>• Capacity - 300kg/h</li> <li>• Suitable capacity Motor</li> </ul> <p><b>Motor:</b> Appropriate capacity TEFC induction motor and DOL starter of reputed make (ABB, Bharat Bijlee, Crompton Greaves, ELGI, Havells, Kirloskar, REMI, Siemens) to run on 415V, 50Hz, 3-phase AC supply.</p> <ul style="list-style-type: none"> <li>• Vibrating feeder / vibrator hopper with control system to adjust the feed rate</li> <li>• Aspiration channel integrated with dust collection system</li> <li>• Safety cover for drive assembly</li> <li>• Automatically controlled gap adjustment system.</li> <li>• Dust collection system with goose neck cyclone, Suction fan and bag filter</li> </ul>	3nos.
9	<p><b>Plansifter</b></p> <p>Grading of ragi into different sized fractions.</p> <ul style="list-style-type: none"> <li>• Capacity: 500kg/h</li> <li>• Number of feeds: 2</li> <li>• Number of sieves: 4 to 6</li> <li>• Sieve size: 1405 µm (12 mesh BSS), 1322 µm (13 mesh BSS), 1240 µm (14 mesh BSS), 1003 µm (16 mesh BSS), 850 µm (18 mesh), 710 µm (22 mesh), 500 µm (30 mesh) &amp; 250 µm (60 mesh)</li> <li>• Type of Sieve: Wire mesh AISI304</li> <li>• Sieve with self-cleaning rubber balls / brush to prevent choking</li> </ul> <p><b>Motor:</b> Appropriate capacity TEFC induction motor and DOL starter of reputed make (ABB, Bharat Bijlee, Crompton Greaves, ELGI, Havells, Kirloskar, REMI, Siemens) to run on 415V, 50Hz, 3-phase AC supply.</p> <p><b>Accessories</b></p> <ul style="list-style-type: none"> <li>➤ 1 set of the additional Sieves size: <ul style="list-style-type: none"> <li>○ 1405 µm (12 mesh BSS), 1322 µm (13 mesh BSS), 1240 µm (14 mesh BSS), 1003 µm (16 mesh BSS), 850µm (18 mesh), 710 µm (22 mesh), 500 µm (30 mesh) &amp; 250 µm (60 mesh).</li> </ul> </li> <li>➤ Products inlet and outlet with sleeves</li> </ul>	2 Nos.
10	<p><b>Cone polisher / Pearling Cone</b></p> <p>Semi-automatic polisher for De-branning of ragi grain</p>	1 No.

	<ul style="list-style-type: none"> <li>• Cone size - 24inch, grain size: 70 (Number of abrasive grits, dimension less)</li> <li>• Capacity – 500kg/h</li> <li>• MOC of Wire mesh cage – Spring steel</li> <li>• Wire mesh size – 0.8 to 1.0mm</li> <li>• Interchangeability of cone and bran cages.</li> <li>• Easily adjustable and replaceable Rubber brakes</li> </ul> <p><b>Motor:</b> Appropriate capacity TEFC induction motor and DOL starter of reputed make (ABB, Bharat Bijlee, Crompton Greaves, ELGI, Havells, Kirloskar, REMI, Siemens) to run on 415V, 50Hz, 3-phase AC supply.</p> <p><b><u>Accessories</u></b></p> <ul style="list-style-type: none"> <li>➤ Surge bin capacity – 250 to 300kg</li> <li>➤ Bran suction system with negative pressure blower, goose neck cyclone system and bag filter</li> <li>➤ Additional 2sets of abrasive coated cone and Spring steel wire-mesh cage of size 0.8, 0.9 and 1.0mm</li> <li>➤ Safety cover for drive assembly</li> <li>➤ Manually controlled gap adjustment system.</li> </ul>	
11	<p><b>Bucket elevator:</b></p> <ul style="list-style-type: none"> <li>• Capacity – 1TPH</li> <li>• MOC – AISI304</li> <li>• Heights of elevators: <ul style="list-style-type: none"> <li>○23' (7.00m) - 5 Nos</li> <li>○32' (9.75m) - 2 Nos</li> </ul> </li> <li>• Crowned pulleys, fitted with taper – lock bushings, non-slip rough top lagging for maximum traction.</li> <li>• Inspection windows on intermediate sections.</li> <li>• Doors for easily cleaning at boot floor for cleaning</li> </ul> <p><b>Motor:</b> Appropriate capacity TEFC induction motor and DOL starter of reputed make (ABB, Bharat Bijlee, Crompton Greaves, ELGI, Havells, Kirloskar, REMI, Siemens) to run on 415V, 50Hz, 3-phase AC supply.</p>	10Nos.
12	<p><b>Storage bins with structure</b> Storage bin with cover, and conical bottom to store cleaned Ragi.</p> <ul style="list-style-type: none"> <li>• Ragi holding capacity of tanks - 500kg each.</li> <li>• Material of construction (MOC): AISI304 SS sheet of 3mm thickness.</li> <li>• Tank Outlet slope - 60° from the horizontal.</li> </ul>	20 nos. (as required)
13	<p><b>Centralised Dust Collection &amp; Discharge System:</b></p>	1No.



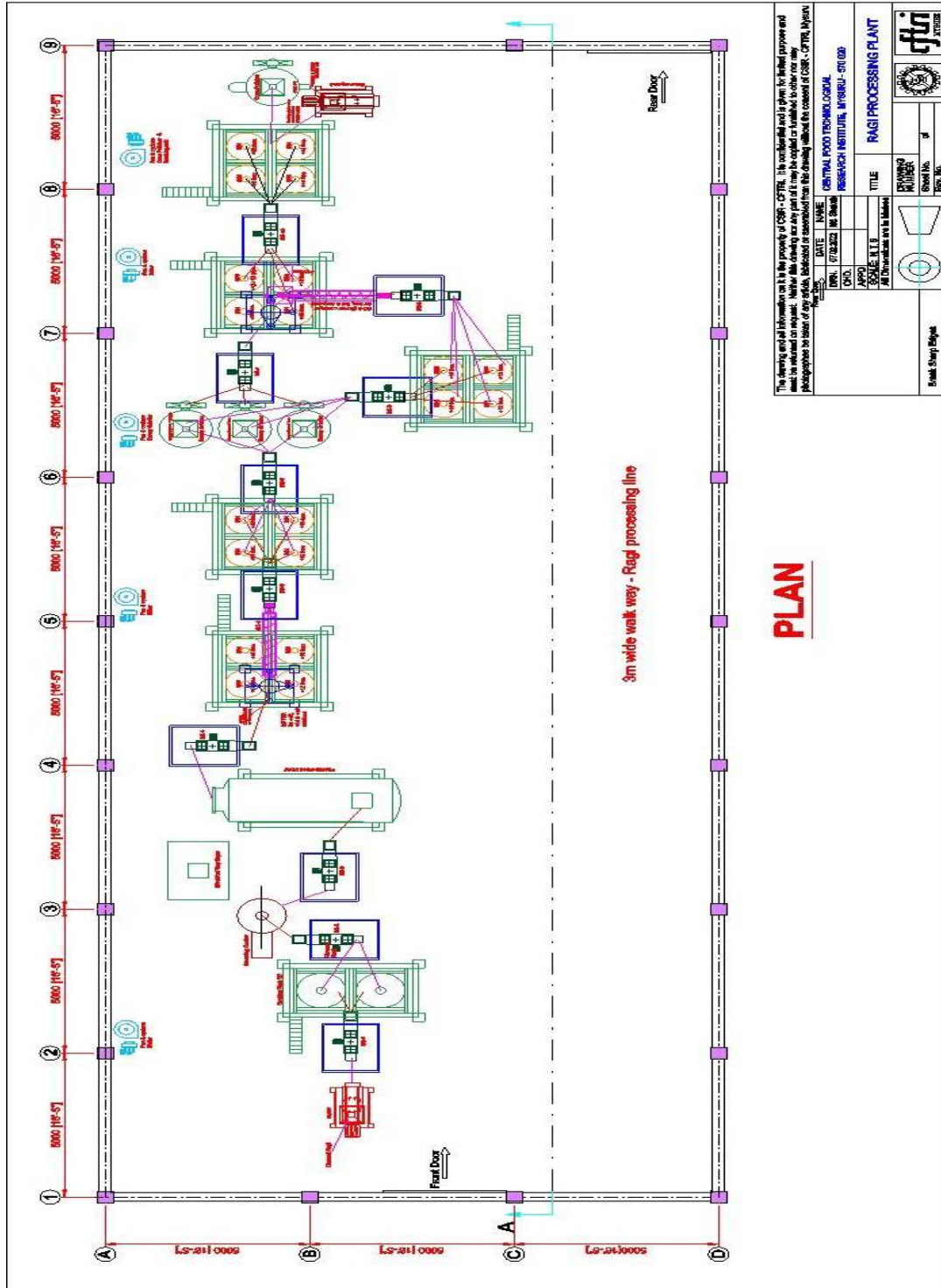
	<ul style="list-style-type: none"> <li>Centralised dust collection and discharge system for entire Ragi plant is required. Suitable blower with fan with safety guard for drive mechanism</li> <li>Suitable cyclone dust collector system to collect dust / impurities from each machine depending on their flow criteria based - density of the dust and rotary airlock discharge system.</li> </ul> <p><b>Motor:</b> Appropriate capacity TEFC induction motor and DOL starter of reputed make (ABB, Bharat Bijlee, Crompton Greaves, ELGI, Havells, Kirloskar, REMI, Siemens) to run on 415V, 50Hz, 3-phase AC supply.</p>	
14	<b>Electrical control panel, wiring, trial run etc.</b>	1

### General:

In addition to the detailed specifications of the machinery, the following points may also be added in the specifications of machinery

- The scope of supply shall include transportation of machinery to CFTRI, installation and commissioning charges at the site as indicated by CFTRI.
- Training on the operation and maintenance of the machinery should be provided by the supplier to the staff identified by the Institute.
- Hopper with SS structure:* Storing tanks 3 to 4 mm body thickness in SS 304 Construction with cover fitted with suitable Discharge Valve with required holding capacity 15 to 20min
- Essential spares for smooth operating plant during warranty period.
- Necessary tools required for operation and maintenance of each individual machinery should be supplied.
- All open drives should be provided with safety guards and operator safety should be ensured.
- Pits made for installing the elevators should be covered with removable grating to ensure operator safety.
- All machinery motors to be covered with safety guards
- All the electrical motor should be supplied with matching starter.
- The electrical motors supplied with the machinery should be from reputed manufacturers i.e. ABB, Bharat Bijlee, Crompton Greaves, ELGI, Havells, Kirloskar, REMI, Siemens and each motor should have an efficiency of 80% and above.
- The DOL starter supplied should be from reputed manufacturers i.e. ABB, Crompton Greaves, Havells, L&T, Siemens
- Remote control buttons for starting/ stopping the individual machine should be provided.
- All hoppers should be fitted with individual feed gate to adjust the flow rate of material.
- Control panel for the entire plant should be provided along with all regulatory safety features, indicator lamps, voltage, current and power factor indicators should be provided.
- The charges for wiring the individual machinery from the supplied control panel with all necessary and regulatory safety features should be included in the scope of supply.
- The AMC for the entire plant beyond the warranty period should also be indicated.
- All vibrating/ reciprocating/ gyratory machines should be supplied with individual anti – vibration mountings.
- All civil construction requirements for erection and commissioning of the machines should be included in scope of supply.

# Ragi Processing Plant



**PLAN**

The drawings and all information on it is the property of CSIR - CFTRI. Its use is restricted and it shall be limited to the purpose and extent for which it was prepared. No part of it may be copied or published or used in any way without the consent of CSIR - CFTRI, Mysore. Photographs to be taken of any article, indicated or assembled from this drawing without the consent of CSIR - CFTRI, Mysore.

DATE	NAME	CENTRAL FOOD TECHNOLOGICAL
17/02/2022	MR. Srinivas	RESEARCH INSTITUTE, Mysuru - 576028
CDR.		
APPD.		
SCALE	1:1	
All dimensions are in Millimeters		
DRAWING NUMBER		
Sheet No. of		
PART No.		
Break Sheet Subject		



## INSTRUCTIONS TO BIDDERS

1. The Instructions, Terms & Conditions, General Conditions of Contract (GCC), Special Conditions of Contract (SCC), Annexures and Formats hosted in our website [www.cftri.res.in](http://www.cftri.res.in) [Path: Home page → Tenders → Standard Tender Document (Scrolling Text)] constitute as an integral part of this tender.
2. Bidders should submit their Financial Bid in the format provided (Price Schedule Format/BOQ) and same has to be uploaded in the above [etender.gov.in](http://etender.gov.in). It is mandatory for all the bidders to upload duly filled Price Schedule Format/BOQ towards submission of their Financial Bid. No changes or modification to the given format is acceptable. Bidders are required to go through the instructions carefully before filling the Price Schedule Format/BOQ.
3. Please note that CSIR-CFTRI, Mysore is registered with the Department of Scientific and Industrial Research (DSIR) for purpose of availing GST @5% concessional rate as per Central Tax(Rate)/Integrated Tax(Rate) in terms of Notification No. 45/2017-Central Tax (Rate)/No. 47/2017- Integrated (Rate) Dt. 14-11-2017. You are advised to quote accordingly.
4. **Pre-Bid Conference (PBC):**  
Pre-Bid Conference is scheduled on **12<sup>th</sup> May 2022 at 3.00p.m in the Office of the Stores & Purchase Department, CSIR-CFTRI, Mysore.** In the present prevailing condition of **COVID-19** Pandemic, PBC either will be held in **person or through Video Conference** (Link can be shared with bidders who wish to participate in PBC). Interested bidders must confirm participation in PBC by email in advance) or any other electronic communication mode.  
It is preferably advised that all prospective bidders may submit their clarifications/questions/queries if any in writing by email to [sosp@cftri.res.in](mailto:sosp@cftri.res.in) & [cosp@cftri.res.in](mailto:cosp@cftri.res.in) by **11<sup>th</sup> May 2022 upto 9.30am** so that any issue can be addressed during PBC scheduled on 12<sup>th</sup> May 2022. The amendments/clarifications if any, to the Bidding Documents pursuant to the Pre-Bid Conference would be uploaded in [etenders.gov.in](http://etenders.gov.in) and same will also be hosted on the Website of CFTRI and all the Prospective Bidders are expected to take cognizance of the Proceedings of the Pre-Bid Conference before formulating and submitting their Bids.
5. **EMD: 2,30,000/- OR Bid Security Declaration(BSD) Form (Annexure-4) must be uploaded along with technical bid.**

6. **Performance Security:** The supplier shall furnish Performance Security of **3% of the contract value** valid for warranty period + additional 2 months after the warranty for this tender.
7. **Integrity Pact** is not applicable for this tender.
8. **Warranty:** Minimum one year from the date of supply, installation & Commissioning, demonstration and acceptance by the Purchaser.
9. **Delivery Period:** Delivery should be effected within 10-12 weeks from the date of issue of Purchase Order.
10. **Terms of Payment:** The method and conditions of payment to be made to the supplier under this Contract shall be as follows:

**Payment for Goods and Services supplied from India:**

Payment for Goods and Services supplied from within India shall be made in Indian Rupees [INR] only as follows:

**On Delivery, Installation & Commissioning, Demonstration and Acceptance:**

- a) 90 % (Ninety Percent) of the Contract Price shall be paid on Delivery of the Goods, Installation & Commissioning, Demonstration and Satisfactory Acceptance of Items & upon submission of the documents specified in GCC/SCC and the acceptance certificate issued by the Purchaser.
- b) Balance 10% payment will be made to the supplier against submission of Performance Security valid for warranty period + additional 2 months issued by Scheduled Commercial Bank.

10. **As per Govt. of India procurement policies,**

- a. The purchaser intends to give purchase preference to local suppliers. There is a restriction on the eligibility of the foreign suppliers/their Indian agents for item with estimated value up to 200 Crores, as per instruction issued by the Govt. of India from time to time in this regard.
- b. The procuring entity intends to give purchase preference to products/goods manufactured by micro, small & medium enterprises. "Local supplier" means a supplier or service provider whose product or service offered for procurement meets the minimum local content as prescribed in DIPP Order No.P45021/2/2017-PP (BE-II) dated 28th May, 2018 or by the competent Ministries/Departments in pursuance of this order. As amended from time to time please also refer to Govt. of India (GOI) Ministry of Commerce & Industry, Department of Promotion of Industry & Internal Trade (DPIIT) Notification no. P45021/2/2017-PP (BE-II) dt.

04.06.2020 & other orders issued by the Govt. of India on “Make in India” from time to time for reference and further details.

“Local content” means the amount of value added in India which shall, unless otherwise prescribed by the Nodal Ministry, be the total value of the items procured (excluding net domestic indirect taxes) minus the value of imported content in the item (including all customs duties) as a proportion of the total value, in percent.

“Class I-Local Supplier”- means a supplier or service provider, whose goods, services or works offered for procurement, has local content equal to or more than 50%, as defined under the said GoI, DIIPT order dt. 04.06.2020 as amended from time to time.

“Class II-Local Supplier” means a supplier or service provided, whose goods, services or works offered for procurement, has local content more than 20% but less than 50%, as defined under the said GoI, DIIPT order dt. 04.06.2020, as amended from time to time.

“Non-Local Supplier means a supplier or service provider, whose goods, services or works offered for procurement, has local content less than or equal to 20% as defined under the said DIIPT order dt. 04.06.2020 as amended from time to time.

#### **Verification of local content**

- a. The “Class-I local supplier”/ “Class-II local supplier” at the time of tender, bidding or solicitation shall be required to indicate percentage of local content and provide self-certification (as per format attached below) that the item offered meets the local content requirement for “Class-I local supplier” / “Class-II local Supplier”, as the case may be. They shall also give details of the location(s) at which the local value addition is made.
- b. In case of procurement for a value in excess of Rs.10 crores, the “Class-I local suppliers” / “Class-II local suppliers” shall be required to provide a certificate from the statutory auditor or cost auditor of the company (in case of companies) or from a practicing cost accountant or practicing chartered accountant (in respect of suppliers other than companies) giving the percentage of local content.
- c. Decision on complaints relating to implementation of this Order shall be taken by the competent authority which is empowered to look into procurement-related complaints relating to the procuring entity.

**Bidders in their own interest must refer to GOI, DIIPT order dt. 04.06.2020 & 16.09.2020, as amended from time to time & submit bid as extant Make in India. Submission of false or misleading declaration in this regard will make bidder concerned liable for punitive action, as per applicable policy and procedures.**

11. **Compliance of restrictions under Rule 144 (xi) of the GFR, 2017 related to restrictions on participation of Foreign Bidders and their Authorized Indian Agent/ Dealer**

- a. Any bidder from a country which shares a land border with India will be eligible to bid in this tender only if the bidder is registered with the Competent Authority.
- b. "Bidder (including the terms "tenderer", consultant" or "service provider" in certain contexts) means any person or firm or company, including any member of a consortium or joint venture (that is an association of several persons, or firms or companies), every artificial juridical person not falling in any of the descriptions of bidders stated herein before, including any agency branch or office controlled by such person, participating in a procurement process.
- c. "Bidder from a country which shares a land border with India" for the purpose of this Order means: -
  - i. An entity incorporated, established or registered in such a country; or
  - ii. A subsidiary of an entity incorporated, established or registered in such a country; or
  - iii. An entity substantially controlled through entities incorporated, established or registered in such a country; or
  - iv. An entity whose beneficial owner is situated in such a country; or
  - v. An Indian (or other) agent of such an entity; or
  - vi. A natural person who is a citizen of such a country; or
  - vii. A consortium or joint venture where any member of the consortium or joint venture falls under any of the above.
- d. **The beneficial owner for the purpose of (iii) above will be as under:**

1. In case of a company or Limited Liability Partnership, the beneficial owner is the natural person(s), who, whether acting alone or together, or through one or more juridical person, has a controlling ownership interest or who exercises control through other means.

Explanation----

- a. "Controlling ownership interest" means ownership of or entitlement to more than twenty-five per cent of shares or capital or profits of the company;

b. "Control" shall include the right to appoint majority of the directors or to control the management or policy decisions including by virtue of their shareholding or management rights or shareholders' agreements or voting agreements.

1. In case of a partnership firm, the beneficial owner is the natural person(s) who, whether acting alone or together, or through one or more juridical person, has ownership of entitlement to more than fifteen percent of capital or profits of the partnership;
2. In case of an unincorporated association or body of individuals, the beneficial owner is the natural person(s), who, whether acting alone or together, or through one or more juridical person, has ownership of or entitlement to more than fifteen percent of the property or capital or profits of such association or body of individuals;
3. Where no natural person is identified under (1) or (2) or (3) above, the beneficial owner is the relevant natural person who holds the position of senior managing official;
4. In case of a trust, the identification of beneficial owner(s) shall include identification of the author of the trust, the trustee, the beneficiaries with fifteen percent or more interest in the trust and any other natural person exercising ultimate effective control over the trust through a chain of control or ownership.

V. An Agent is a person employed to do any act for another, or to represent another in dealings with third person.

VI. The successful bidder shall not be allowed to sub-contract works to any contractor from a country which shares a land border with India unless such contractor is registered with the Competent Authority.

Bidders are requested to submit the prescribed Certificate as per Annexure enclosed below with local details of local value addition.

**12. Purchase Preference to Micro and Small Enterprises (MSEs) and Purchase Preference linked with MAKE IN INDIA Order shall be applicable subject to full compliance of Technical Specification and other terms and conditions of the RFQ / NIT and Contract, as per Government of India procurement policies.**

**The purchaser intends to give purchase preference to:**

- Make in India (as per DPIIT Order No. P-45021/2/2017-PP (BE-II) dated 16th September 2020 of Ministry of Commerce and Industry, Government of India. The preference to Public Procurement (Preference to Make in India) Order 2012 shall be subject to meeting technical specifications and full compliance of other terms and conditions of the RFQ / NIT and Contract.
- Products / goods manufactured by micro and small enterprises as per MSE order 2012 and any amendments thereon. If the bidder wants to avail the Purchase preferences, the bidder must be the manufacturer of the offered product in case of bid for supply of goods. Traders are excluded from the preview of public procurement policy for micro and small enterprises. In respect of bid for services, the bidder must be the service provider of the offered service. Relevant documentary evidence in this regard shall be uploaded along with the bid in respect of the offered product or service. The aforesaid Policy is meant for procurement of only goods produced and Services rendered by MSEs and not for any trading activities by them. An MSE unit will not get any Purchase Preference over any other MSE Unit.
- In case a bidder is eligible to seek benefit under Purchase PP- MAKE IN INDIA policy as well as PPP for MSE 2012, then the bidder should categorically seek benefits against only one of the two policies i.e. either MAKE IN INDIA OR MSE policy in BID FORM. The option once exercised cannot be modified subsequently.



**Annexure-13**

Format for declaration by the Bidder on Non-applicability of Exclusion from Restrictions under Rule 144 (xi) of the General Financial Rules (GFRs), 2017 (on Letter Head of the bidder)

(Ref: - Govt. of India, Ministry of Finance, Dept. of Expenditure Order No. F.No.6/18/2019-PPD dated 23.07.2020 {Public Procurement No.1} and subsequent orders on the subject)

Ref. No: \_\_\_\_\_ Date \_\_\_\_\_

To,

The Director,  
CSIR-CFTRI,  
Cheluvamba Mansion  
Opp. Railway Museum, KRS Road,  
Mysuru-570020

Sir,

With reference to your Tender No. \_\_\_\_\_ dated \_\_\_\_\_ I/We hereby undertake that "I have read the clause regarding restrictions on procurement from a bidder of a country which shares a land border with India; I hereby certify that this bidder is not from such country or, if from such a country, has been registered with the Competent Authority. I hereby certify that this bidder fulfills all requirements in this regard and is eligible to be considered.

Thanking you,

Yours sincerely,

Signature (Name of the Authorized Signatory)

Company Seal

"[Where applicable, evidence of valid registration by the Competent Authority shall be attached]"

**Annexure-14**

Self-Certification Form for Minimum 50% or for Minimum 20% Local Content (on Letter Head)

1. Ref: DPIIT Order No.P-45021/2/2017-PP (BE-II) pref. to Make in India dt. 28th May, 2018 as amended vide OM dated 16th Sept 2020 or by the competent Ministries/Departments in pursuance of this order.

2. Ref: Rule 153 (iii) of General Financial Rule - GFR (GoI)

This is to certify that percentage of local content against CSIR-CFTRI tender no..... dt.....and our technical bid no..... dt. ....is .....Percent(In Words.....) class ...../local supplier.

Local content value added- (PERCENTAGE)	
State:	
District:	
Place:	

Thanking you,

Yours sincerely,

Signature (Name of the Authorized Signatory)

Company Seal

## COVER DETAILS - DOCUMENTS TO BE UPLOADED:

### Cover - 1: Pre-Qualification /Technical Bid (Techno-Commercial Details) for Procurement of Ragi Processing Line (Document Type .pdf)

#### 1. Eligibility Criteria

- (a) Catalogue / Brochure of the Model Quoted along with a detailed description of the essential technical and performance characteristics of the goods being offered, with an item by-item commentary on the indented technical specification and documentary evidence of conformity of the goods and services to the bidding documents demonstrating substantial responsiveness of the goods being offered.
  - (b) Two (2) latest Purchase Order Copies with price of reputed Govt. Research Institutes/Organisation or any other institutions for the supply & installation and satisfactory functioning of the similar/equivalent equipment to comply with minimum eligibility criteria.
  - (c) User list for the quoted model along with contact Numbers and email ID
  - (d) Warranty offered and delivery schedule.
  - (e) Land boarder declaration (Annexure-13) and Local Content Certification (Annexure-14) as per enclosed format
2. Bidder Information Form (Annexure - 1)
  3. Manufacturer's Authorization Form (Annexure - 2)
  4. Bid Security Form (Annexure-3) / **Bid Security Declaration Form (Annexure-4)**
  5. Performance Statement Form (Annexure - 5)
  6. Deviation Statement Form (Annexure - 6)
7. Bidders must furnish a Compliance Statement of each and every required specification of our tender (Annexure-8)
8. Documents establishing goods eligibility and conformity to bidding document; indicating the Indian Customs Tariff Number (ICT & HSN No.)
  9. Schedule of Requirements - (Refer Chapter 5 for Format)
  10. Declaration abiding by the Code of Integrity and No Conflict of Interest for Public procurement (Annexure - 11)

**Cover - 2: Price Schedule Format/BOQ (Document Type. xl) BOQ uploaded in etenders.gov.in**

**Please refer to our Standard Tender's Terms & Conditions uploaded in [www.cftri.res.in](http://www.cftri.res.in) under tender (Chapter-7) for above Format of Annexures. Any other supporting documents to avail preference/benefits as per Standard Tender Document must be uploaded with the Technical bid for technical qualification.**